

Alt-Posaune

Ludwig van Beethoven
Symphony No. 9 in D Minor, Op. 125

Allegro ma non troppo, un poco maestoso $\text{♩} = 88$

tacet

Molto vivace $\text{♩} = 116$

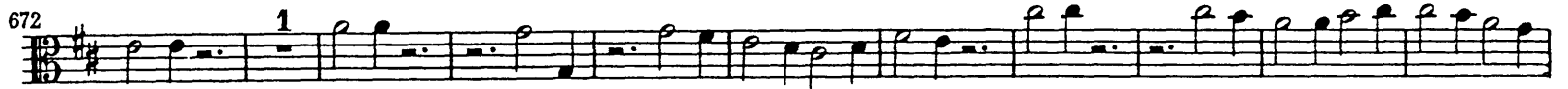
Presto $\text{♩} = 116$

Adagio molto e cantabile $\text{♩} = 60$

tacet

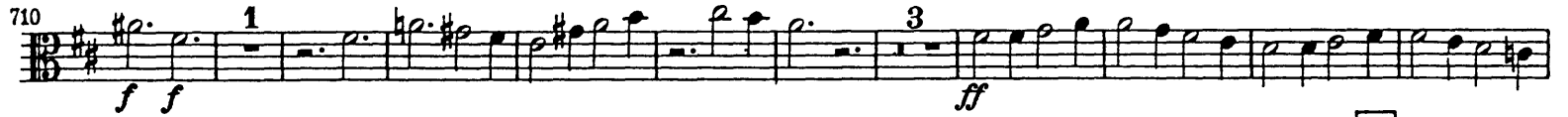
Beethoven — Symphony No. 9

Trombone alto


672 

683 

696 

710 

724 

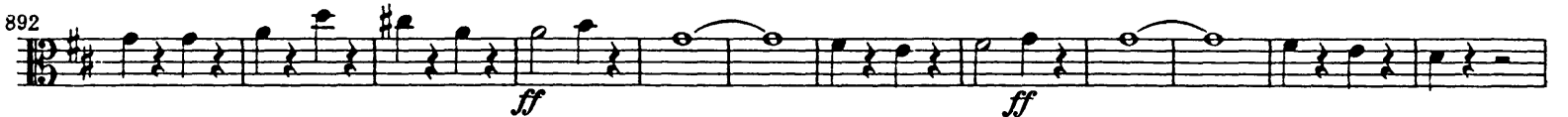
810 

848 

859 

869 

879 

892 

904 

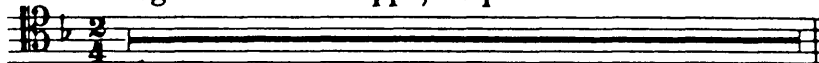
916 

928 

Ludwig van Beethoven
Symphony No. 9 in D Minor, Op. 125

Tenor-Posaune

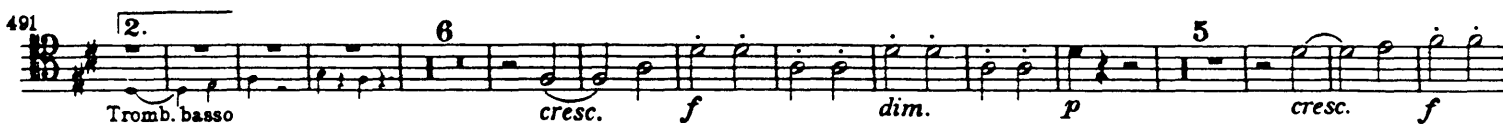
Allegro ma non troppo, un poco maestoso



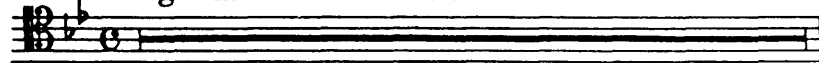
tacet

Molto vivace $\text{♩} = 116$

Presto $\text{♩} = 116$



Adagio molto e cantabile



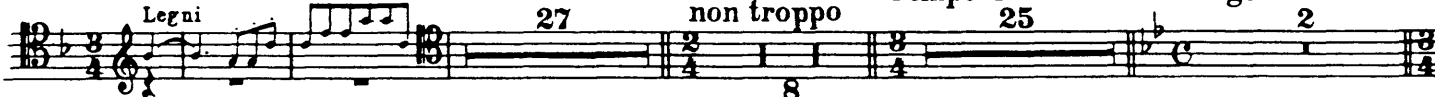
tacet

Presto $\text{♩} = 96$

Allegro ma non troppo

Tempo I

Adagio cantabile



Tempo I, Allegro

Allegro assai

Tempo I, Allegro

Allegro assai

Presto

Allegro assai



Allegro assai vivace alla Marcia

Andante maestoso $\text{♩} = 72$



Adagio ma non troppo,



Ah, nest du... den

ma divoto $\text{♩} = 60$



Beethoven — Symphony No. 9

Trombone tenore

Allegro energico, sempre ben marcato $\text{♩} = 84$

Viol. II

655 5

673 1 1

684 P

694

703 Q

716 1 1 2

ff ff ff ff ff ff ff ff ff ff

730 R S

Allegro ma non tanto Poco Adagio Tempo I Poco Adagio

32 18 4 6

32 15 4

Poco Allegro, stringendo il tempo, sempre più Allegro Prestissimo $\text{♩} = 132$

Archi Archi Legni *ff*

843 2

855 1 2 8 4 5

867 6 7

878 T

891

904 1

916 Maestoso $\text{♩} = 60$ Prestissimo 1 2 8 4 5 6 7

928 1 2 3 4 5 6 7 8 9 1

ff ff ff ff ff ff ff ff

Ludwig van Beethoven
Symphony No. 9 in D Minor, Op. 125

Baß-Posaune

Allegro ma non troppo, un poco maestoso

tacet

Molto vivace $\text{♩} = 116$

Archi *f* 1 Timp. Orch. 2 199 3 5 3
G.P. G.P. G.P. G.P. G.P.

17 19 189 3 1. 9 3 2. 7 8
G.P. G.P.

stringendo il tempo 404 Orch. *f* Presto $\text{♩} = 116$

414 6 1. 2. 2. 15 32 Ob.
f > *p* Viol. I

473 M *fp* *cresc.*

481 *f*

489 1. 2. *fp* *cresc.*

499 *f* *dim.* *p* *cresc.*

510 1 *cresc.* *f* *dim.*

528 1 1 1 *sempre più p* *pp* poco ritard. Molto vivace 8 199 3 5 3
G.P. G.P.

Beethoven — Symphony No. 9

2

Trombone basso

689 17 19 **Q** 189 3 7 Coda 8 *stringendo il tempo* Orch.

G.P.

939 *Presto* *ff > p* 5 1 G.P. *ff f f f*

Adagio molto e cantabile

tacet

Presto $\text{♩} = 96$ 29 *Allegro ma non troppo* *Tempo I* 25 *Adagio cantabile* *Tempo I, Allegro* 12

Allegro assai 4 *Tempo I, Allegro* 11 *Allegro assai* 116 *Presto* 29 *Allegro assai* 93

Allegro assai vivace alla Marcia

331 162 **L** *Vcllo, C-B.* 48 **M** 48 *Archi*

Andante maestoso $\text{♩} = 72$

595 *ff sf sf ff f*

606 **N** *sf sf ff sf sf*

618 *f sf p*

Adagio ma non troppo, ma divoto $\text{♩} = 60$

627 8 *Chor-Baß* 3 4 *Ah, nest du den Schöpfer,* *f ff*

Allegro energico, sempre ben marcato $\text{♩} = 84$

651 *pp* 6 10 *Viol. II* *Fl., Ob.*

670 **O** *ff f f f f f f f f f f f f f f f f*

682 *f f f f f f f f f f* **P** 1 1

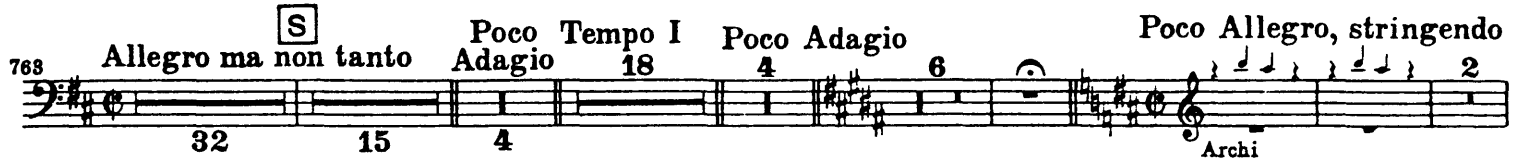
Beethoven — Symphony No. 9

Trombone basso

696 

709 

719 

768 

847 


858 

868 

877 

889 

899 

910 

920 

930 